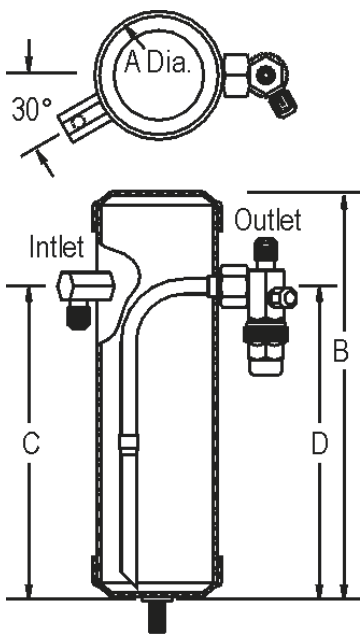


LIQUID REFRIGERANT

Receivers



**3/8-16 Thread

We manufacture a complete line of both Horizontal and Vertical liquid refrigerant receivers. Sizes range from 3" to 20" diameter. Receiver storage capacities are based on the liquid occupying no more than 90% of the internal volume when the temperature of the refrigerant is 90°F (32°C) per ASHRAE Standard 15-78. Receivers should be selected based on the operating charge for all system components, including the liquid lines. It is usual to add a small percentage to cover the refrigerant in long runs of suction and discharge lines, etc. It is essential that the maximum operating charge be determined, e.g., winter charge in air cooled condenser having flooded head pressure control, this being much greater than the normal summer charge. We are certified by the National Board of Boiler and Pressure Vessel Inspectors. All vessels over 6" inside diameter are designed and manufactured in accordance with Section VIII of the ASME Code and are marked with U or UM Code symbol stamps. Vessels 3" through 6" diameter are copper brazed and UL listed. We also manufacture a wide range of UL listed and ASME receivers for many original equipment manufacturers. These receivers feature special lengths and fittings. Also our "SG" series sight glasses, liquid level dial indicator connections, and mounting brackets are available on special order.

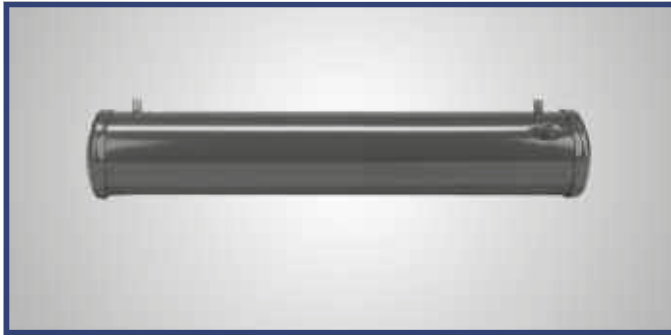
Maximum WP 450 PSI *All Pump Down Capacities are calculated @ 90% of receiver volume @ 90°F. **S-8067 & S-8068 come with mounting feet instead of 3/8" mounting stud.

Catalog Number	* Pump Down Capacity (Lbs.)			Dimensions in Inches				Wt. Lbs.	Flare Connections	
	R134a	R22	R404a/R507	A	B	C	D		Inlet	Outlet
S-8060	2.4	2.4	2.0	3.0	10	7	7	2	1/4	1/4
S-8061	2.4	2.4	2.1	3.5	7.5	5	5	2	1/4	1/4
S-8062	3.3	3.3	2.8	3.5	10	7.63	7.63	3	1/4	1/4
S-8063	4.3	4.2	3.7	4.0	10	7.25	7.25	4	1/4	1/4
S-8064	6.7	6.6	5.7	5.0	10	6.75	6.75	6	1/4	1/4
S-8065	11.6	11.5	10.0	6.0	12	8	8	10	3/8	3/8
S-8066	17.6	17.3	15.0	6.0	18	15	15	16	3/8	1/2
S-8067	23.5	23.2	20.1	6.0	24	21.25	14.88	21	1/2	1/2
S-8068	29.4	29.1	25.2	6.0	30	21.25	14.88	26	5/8	5/8

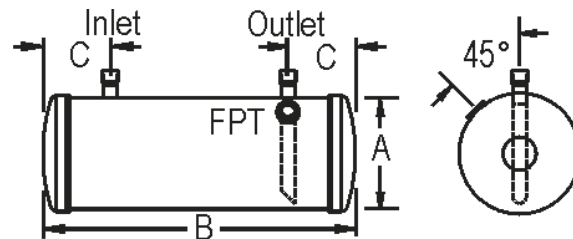


HORIZONTAL LIQUID

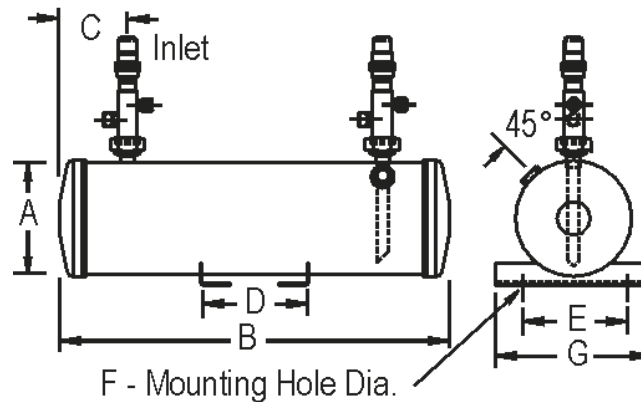
Refrigerant Receivers



S-8600 Series Horizontal Receiver



S-8600V Series Horizontal Receiver with Brackets And Valves



Catalog Number	Pump Down Capacity (lbs)			Dimensions in Inches			Ship Wt. Lbs.	Connections (ODS)		
	R134a	R22	R404a / R507	A	B	C		Inlet	Outlet	FPT
S-8600	18.8	18.6	16.2	5.00	28	3.00	19	5/8"	5/8"	3/8"
S-8610	24.3	24.0	20.9	5.00	36	3.00	25	5/8"	5/8"	3/8"
S-8620	29.2	28.8	25.0	6.00	30	3.63	24	5/8"	5/8"	3/8"
S-8630	35.0	34.6	30.1	6.00	36	3.63	28	5/8"	5/8"	3/8"

Catalog Number	Pump Down Capacity (lbs)			Dimensions in Inches							Ship Wt. Lbs.	Connections (ODS)		
	R134a	R22	R404a / R507	A	B	C	D	E	F	G		Inlet	Outlet	FPT
S-8600V	18.8	18.6	16.2	5	28	3.00	14	5.5	.44	7	19	1/2"	1/2"	3/8"
S-8630V	35.0	34.6	30.1	6	36	3.63	18	5.5	.44	7	28	1/2"	1/2"	3/8"



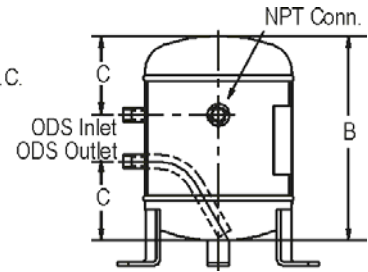
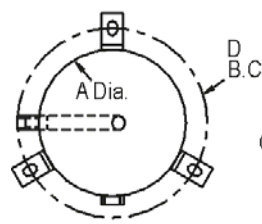
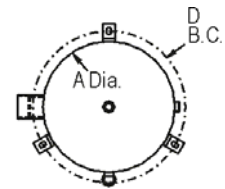


Fig. 1



Catalog Number	Fig. No.	Pump Down Cap. (lbs)				Dims in Inches				Relief NPT	ODS Inlet	ODS Outlet	Int. Vol. (ft ³) @ 90%	Wt. lbs
		R22	R134A	R404A	R407C	A	B	C	D					
S-8490	1	16.0	16.2	13.9	15.5	6.625	15	4.63	9.12	3/8	5/8	5/8	0.22	20
S-8500	1	20.9	21.2	18.1	20.3	8.625	12	4.63	11.12	3/8	5/8	5/8	0.29	29
S-8510	1	28.9	29.3	25.1	28.1	8.625	16	4.63	11.12	1/2	5/8	5/8	0.40	35
S-8520	1	49.9	50.6	43.2	48.5	10.75	18	6.50	13.25	1/2	1 1/8	7/8	0.69	60
S-8530	1	69.8	70.9	60.5	67.9	12.75	18	6.56	15.25	1/2	1 1/8	1 1/8	0.96	86
S-8540	1	78.7	79.9	68.2	76.5	12.75	20	6.75	15.25	1/2	1 1/8	1 1/8	1.09	96
S-8550	1	96.5	97.9	83.7	93.9	12.75	24	6.75	15.25	1/2	1 1/8	1 1/8	1.33	113
S-8551	1	149.9	152.1	130.0	145.8	12.75	36	6.75	15.25	1/2	1 3/8	1 3/8	2.07	163
S-8552	1	203.4	206.3	176.3	197.7	12.75	48	6.56	15.25	1/2	1 5/8	1 5/8	2.80	211

- All Pump-down Capacities are calculated @ 90% of receiver volume @ 90°F.
- To convert to other refrigerants, consult technical service 800-627-5148.
- Quotations on custom models available upon request.

MAXIMUM WORKING PRESSURE: 450 PSIG.

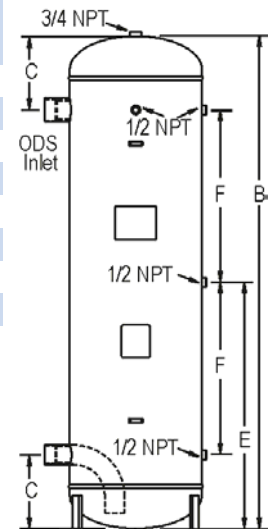


Fig. 2

Catalog	Fig.	Pump Down Cap. (lbs)				Dimensions in Inches						Relief NPT	ODS Inlet	ODS Inlet	Int. Volume (ft ³) @ 90%	Wt. lbs
		R22	R134A	R404A	R407C	A	B	C	D	E	F					
S-8561	2	241.2	244.8	209.1	234.5	14	48	9	16.5	24	11	0.75	1.625	1.625	3.3264	195
S-8562	2	304.9	309.4	264.4	296.5	14	60	9	16.5	30	21	0.75	2.125	1.625	4.2048	241
S-8571	2	374.1	379.6	324.3	363.7	16	56	9	18.5	28	21	0.75	2.625	2.125	5.1588	330
S-8572	2	402.1	408.0	348.6	391.0	16	60	9	18.5	30	21	0.75	2.625	2.125	5.5449	351
S-8573	2	458.2	464.9	397.3	445.5	16	68	9	18.5	34	21	0.75	2.625	2.125	6.3189	393
S-8582	2	501.1	508.4	434.4	487.2	18	60	9	20.5	30	21	0.75	2.625	2.125	6.9093	398

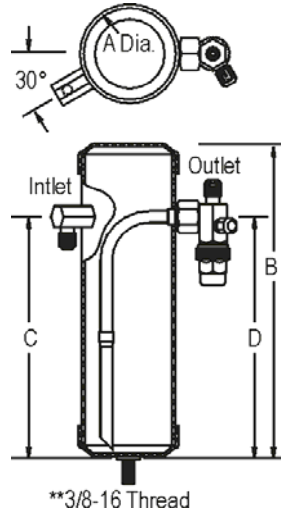
- All Pump-down Capacities are calculated @ 90% of receiver volume @ 90°F.
- To convert to other refrigerants, consult factory 800-627-5148.
- The three in-line 1/2" FPT fittings are available for use with the SG-04 Sight Glasses or the S-9400 series Electronic Level Switch.
- Quotations on custom models available upon request.

MAXIMUM WORKING PRESSURE: 450 PSIG.

HIGH PRESSURE LIQUID Refrigerant Receivers



UL Listed Receivers



Catalog Number	Pump Down Cap. (lbs)		Dimensions (in)				Dry Weight (lbs)	Connections		Int. Volume (ft ³) @ 90%
	R744 (CO ₂)	R410a	A	B	C	D		Inlet	Outlet	
SHP-8024	1.05	1.11	2.50	8.0	7.6	7.6	3.1	1/4 FL	1/4 FL	0.017
SHP-8025	1.6	1.7	2.50	12.0	8.6	7.7	3.5	1/4 FL	1/4 FL	0.026
SHP-8029	2.3	2.4	3.00	12.0	7.6	7.6	4.7	1/4 FL	1/4 FL	0.038
SHP-8030	3.4	3.6	3.00	18.0	14.5	7.6	6.4	1/4 FL	1/4 FL	0.057
SHP-8034	3.1	3.3	3.50	12.0	7.6	7.6	4.7	1/4 FL	1/4 FL	0.052
SHP-8035	6.3	6.7	3.50	24.0	20.5	7.6	8.0	1/4 FL	1/4 FL	0.104
SHP-8039	4.0	4.3	4.00	12.0	7.8	7.8	8.3	1/4 FL	1/4 FL	0.067
*SHP-8040	10.1	10.6	4.00	30.0	26.3	7.8	18.2	1/4 FL	1/4 FL	0.167
SHP-8049	9.6	10.1	5.00	18.0	15.0	15.0	14.6	1/4 FL	1/4 FL	0.159
*SHP-8050	19.1	20.2	5.00	36.0	32.3	7.9	27.0	1/4 FL	1/4 FL	0.317
SHP-8060	8.9	9.5	6.00	12.0	8.0	8.0	18.5	3/8 FL	3/8 FL	0.148
*SHP-8160	13.4	14.2	6.00	18.0	15.0	15.0	26.3	3/8 FL	1/2 FL	0.223
*SHP-8260	17.9	18.9	6.00	24.0	19.8	15.0	34.0	1/2 FL	1/2 FL	0.297
*SHP-8360	26.8	28.4	6.00	36.0	31.8	15.0	49.2	5/8 FL	5/8 FL	0.445

- Maximum WP 700 PSI (ASME & UL Listed Receivers).
- All Pump Down Capacities are calculated @ 90% of receiver volume, 90F for R410a, 20F for R744.
- *Receiver comes with mounting feet instead of 3/8" mounting stud.

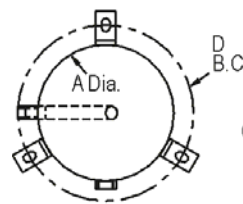
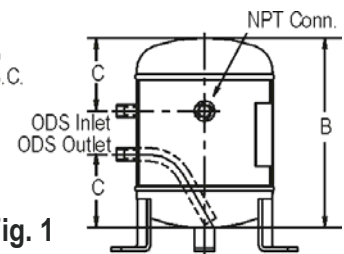


Fig. 1



ASME Code Vertical Receivers

Catalog Number	Fig. No.	Pump Down Cap. (lbs)		Dimensions (in)				Dry Weight (lbs)	Relief NPT	Connections		Int. Volume (ft ³) @ 90%
		R744 (CO ₂)	R410a	A	B	C	D			Inlet	Outlet	
S-8490-HP	1	12.6	13.3	6.63	15	4.63	9.12	25	3/8	5/8	5/8	0.21
S-8500-HP	1	16.8	17.7	8.63	12	4.63	11.1	26	3/8	5/8	5/8	0.28
S-8510-HP	1	23.2	24.5	8.63	16	4.63	11.1	34	1/2	5/8	5/8	0.38
S-8520-HP	1	38.5	40.7	10.8	18	6.50	13.3	69	1/2	1 1/8	7/8	0.64
S-8530-HP	1	53.8	56.9	12.8	18	6.50	15.3	95	1/2	1 1/8	1 1/8	0.89
S-8540-HP	1	60.9	64.4	12.8	20	6.50	15.3	103	1/2	1 1/8	1 1/8	1.01
S-8550-HP	1	74.9	79.2	12.8	24	6.50	15.3	121	1/2	1 1/8	1 1/8	1.24
S-8551-HP	1	117.0	123.8	12.8	36	6.50	15.3	175	1/2	1 1/8	1 3/8	1.94
S-8552-HP	1	159.2	168.5	12.8	48	6.50	15.3	228	1/2	1 1/8	1 3/8	2.64

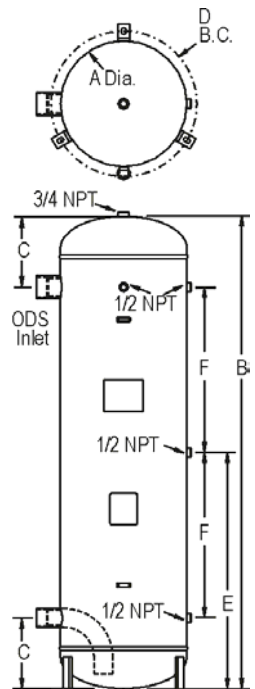


Fig. 2

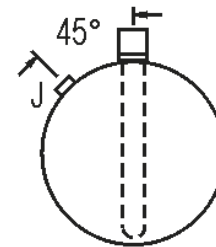
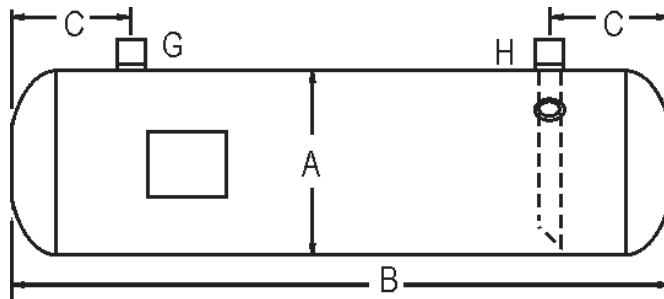
Catalog Number	Fig. No.	Pump Down Cap. (lbs)		Dimensions (in)						Dry Weight (lbs)	Connections		Int. Volume (ft ³) @ 90%
		R744 (CO ₂)	R410a	A	B	C	D	E	F		Inlet	Outlet	
S-8561-HP	2	186.8	197.6	14	48	9	16.5	24	11	307	1 5/8	1 5/8	3.10
S-8562-HP	2	236.8	250.5	14	60	9	16.5	30	21	378	2 1/8	1 5/8	3.93
S-8571-HP	2	291.2	308.0	16	56	9	18.5	28	21	410	2 5/8	2 1/8	4.83
S-8572-HP	2	313.4	331.5	16	60	9	18.5	30	21	437	2 5/8	2 1/8	5.20
S-8573-HP	2	357.7	378.4	16	68	9	18.5	34	21	561	2 5/8	2 1/8	5.94

- Quotations on custom models available upon request.



ASME HORIZONTAL

Liquid Receivers



Catalog Number	Dimensions in Inches			Pump Down Cap. (lbs)				ODS Inlet (G)	ODS Outlet (H)	Relief NPT (J)	Int. Volume (ft ³) @ 90%	Wt. lbs
	A	B	C	R22	R134A	R404A	R407 C					
S-8639	6.625	36	4.63	40.3	40.9	34.9	39.2	7/8	7/8	3/8	0.56	44
S-8640	8.625	36	4.63	69.0	70.0	59.8	67.1	1 1/8	7/8	1/2	0.95	65
S-8650	8.625	42	4.63	81.1	82.2	70.3	78.8	1 1/8	7/8	1/2	1.12	71
S-8660	8.625	48	4.63	93.1	94.4	80.7	90.5	1 1/8	1 1/8	1/2	1.28	77
S-8670	8.625	60	4.63	117.1	118.8	101.5	113.8	1 1/8	1 1/8	1/2	1.61	108
S-8680	8.625	72	6.50	140.8	142.9	122.1	136.9	1 1/8	1 1/8	1/2	1.94	127
S-8690	10.75	36	6.50	105.3	106.9	91.3	102.4	1 3/8	1 3/8	1/2	1.45	115
S-8700	10.75	48	6.50	142.7	144.8	123.7	138.8	1 3/8	1 3/8	1/2	1.97	138
S-8710	10.75	60	6.50	180.1	182.8	156.2	175.1	1 3/8	1 3/8	1/2	2.48	166
S-8720	10.75	72	6.50	217.5	220.7	188.6	211.5	1 3/8	1 3/8	1/2	3.00	196
S-8730	10.75	84	6.50	254.9	258.7	221.0	247.9	1 5/8	1 3/8	1/2	3.52	255
S-8740	10.75	96	6.50	292.3	296.6	253.4	284.2	1 5/8	1 3/8	1/2	4.03	285
S-8750	12.75	48	8.00	202.4	205.4	175.5	196.8	1 5/8	1 3/8	1/2	2.79	128
S-8760	12.75	60	8.00	255.8	259.5	221.7	248.7	1 5/8	1 3/8	1/2	3.53	218
S-8770	12.75	72	8.00	309.2	313.7	268.0	300.6	2 1/8	1 3/8	1/2	4.26	260
S-8780	12.75	96	8.00	416.0	422.1	360.7	404.5	2 1/8	1 3/8	1/2	5.74	360

- All Pump-down Capacities are calculated @ 90% of receiver volume @ 90°F.
 - To convert to other refrigerants, consult technical service 800-627-5148.
 - Quotations on custom models available upon request.
- MAXIMUM WORKING PRESSURE: 450 PSIG.**

