

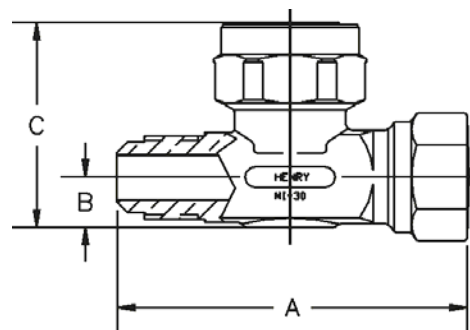
Features:

- **Forged brass and steel** construction with clear fused glass window indicating element protected by filter screen
- **Copper flare gasket provided** with MI-30-F
- **Listed by Underwriters' Laboratories** and the Canadian Standards Association
- **Positive color contrast:** Yellow = Wet, Green = Dry Completely reversible
- **Moisture element protected** by filter screen and pad
- **Female flare types** have mechanically retained copper gasket
- **Replacement: Moisture element**, seal parts and viewing window available; order replacement cap assembly catalog number MI-3
- **Maximum working pressure:** 500 PSI (34.5 Bar)
- **Maximum temperature rating:** +200°F (+93°C)
- **Dri-Vue color Indicators:** Safe=Green; Caution= Chartreuse; Danger=Yellow
- **Moisture Content:** Parts per million (PPM)
- **A moisture level** of 15 PPM for Refrigerant 12. 30 PPM for Refrigerant 502 and 60 PPM for Refrigerant 22 and 500 indicated in the green color range of the tables are generally considered dry and safe for most installations.

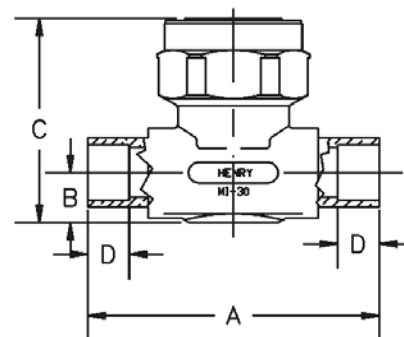


Patent #5852937

Type MI-30-F
SAE Flare, M x F



Type MI-30-S
Solder



"Dri-Vue" Moisture-Color Tables

Type	Temp.	Moisture Content - Parts per Million - Indicator Color		
		Green	Chartreuse	Yellow
Refrigerant 12	75°F	Below 5	5-15	After 15
	100°F	Below 10	10-30	After 30
	125°F	Below 15	15-45	After 45
Refrigerant * 22 & 500	75°F	Below 30	30-120	After 120
	100°F	Below 45	45-180	After 180
	125°F	Below 60	60-240	After 240
Refrigerant 502	75°F	Below 15	15-50	After 60
	100°F	Below 25	25-90	After 90
	125°F	Below 30	30-120	After 120

* For R134a, use R22 data.

Type	Catalog Number	Size Connection	Dimensions in Inches				Weight lbs.
			A	B	C	D	
MI-30-F	MI-30-1/4F	1/4" Male Flare x 1/4" Female Flare	2.25	.34	1.66	—	.43
MI-30-F	MI-30-3/8F	3/8" Male Flare x 3/8" Female Flare	2.81	.41	1.81	—	.57
MI-30-F	MI-30-1/2F	1/2" Male Flare x 1/2" Female Flare	3.13	.41	1.81	—	.59
MI-30-S	MI-30-1/4S	1/4" O.D.S.	2.25	.34	1.66	.31	.40
MI-30-S	MI-30-3/8S	3/8" O.D.S.	2.38	.34	1.66	.31	.41
MI-30-S	MI-30-1/2S	1/2" O.D.S.	2.63	.41	1.66	.38	.41
MI-30-S	MI-30-5/8S	5/8" O.D.S.	2.94	.44	1.84	.50	.46