

# BALL VALVES

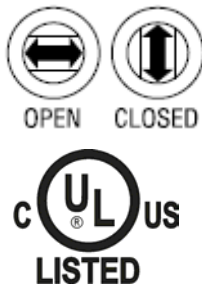
## Direct Operated, Bi-Directional Flow



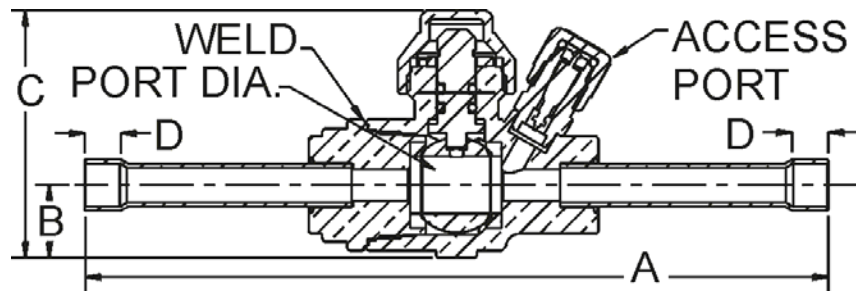
### Features:

- **Maximum working pressure:** 700 psig (40 Kg/cm<sup>2</sup>) 937 Series only.
- **Temperature range:** -40°F (-40°C) to +250°F (+149°C)
- **Patented live loaded stem seal**
- **Double "O" ring** for greater seating surface
- **Full non-restricted flow except marked\***
- **Body** is hermetically sealed
- **Hexagonal** hand tightened seal cap, "O" ring sealed
- **Valve position indicators:** arrow on stem points to valve outlet when ball is in the open position, arrow points across the line of flow when the ball is in the closed position; valves are non-directional as indicated by arrow on body
- **Blowout-proof stem design;** positive stops ensure precise positioning of ball in open or closed positions
- **Quick flow operation:** valves fully opened or closed with quarter turn of valve stem
- **Forged brass body,** brass cap and adapter, plated steel stem, Teflon ball seals and gasket
- **Extended copper** connections for easy brazing
- **Triple sealed stem** and cap prevent refrigerant loss
- **Specifically designed for use** with halocarbon refrigerants and industrial fluids non-corrosive to brass, steel, copper and synthetic rubber
- **Valves are helium leak tested** to a maximum of 0.1 oz./yr.
- Cap Replacement

### VALVE POSITION INDICATOR



Type 937 and 907 shown



Catalog Std. Valve	Catalog Schrader	Size Connection ODS	Dimensions in Inches					Ball Port Diameter	907 Wt. Lbs	937 Wt. Lbs	**CV Value
			A	C Ext	C Std	D	C Schrader				
907203	937203	3/8"	6.5	2.75	2.25	0.31	1.69	0.5	0.8	0.9	2.44
907204	937204	1/2"	6.5	2.75	2.25	0.5	1.69	0.5	0.8	0.9	6.01
907205	937205	5/8"	6.5	2.75	2.25	0.5	1.69	0.5	0.8	0.9	15.1
907307	937307	7/8"	7.25	3.16	2.5	0.75	2.13	0.75	1.3	1.4	42.0
907409	937409	1-1/8"	8.5	4.25	3.75	0.91	2.50	1	2.2	2.3	82.5
907511	937511	1-3/8"	9.25	4.75	4.25	0.97	2.75	1.25	3.1	3.2	142.2
907613	937613	1-5/8"	10	5.2	4.75	1.09	3.00	1.5	4.3	4.4	220.8
907617	937617	2-1/8"	11.38	6.82	6.25	1.19	3.63	2	9.3	9.4	438.9
907721*	937721*	2-5/8"	12.88	6.82	6.25	1.53	3.63	2.0	9.6	9.7	229.5
907725*	937725*	3-1/8"	14.38	6.82	6.25	1.66	3.63	2.5	9.9	10	373.2

\* Reduced Port

\*\*GPM water at 1 psi pressure drop across valve