

SIGHT GLASS

Moisture Indicator: Allin Liquid Eye™



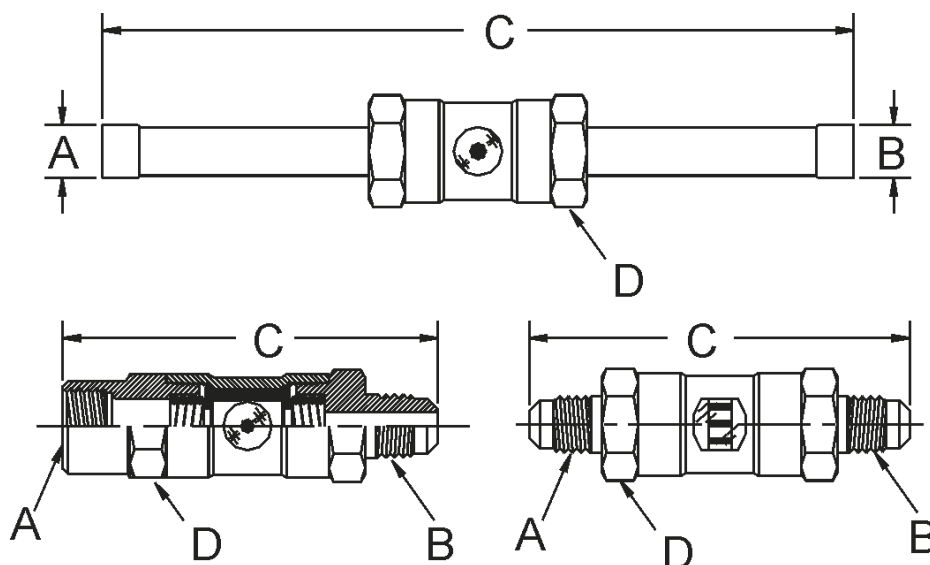
For Quick Indication of Refrigerant and Moisture In A System Features

- Solid Brass Body
- Shock Resistant Glass
- Available In Flare or Solder (Extended Ends)
- Color Bar Designed for HFC Refrigerants
- Max Working Pressure 302 psi
- Max Temp. 500°F
- Made in the USA



The Allin Liquid Eye has a unique "See-Thru" feature that's more readable than other sight glasses. The dot on the tube is magnified when the tube is full of refrigerant to give a quick, easy indication.

The Allin Moisture Reactor is easier to read in minimum light. It provides a quick indication of refrigerant in the tube, as well as the pressure of moisture. When moisture is present, the color bars on the band within the tube change color. A few hours after installation, the reactor will stabilize alternating green and yellow bands to indicate moisture. All green bands indicates no moisture.



Catalog Number - Sight Glass Type		Catalog Number - Moisture Indicator Type		Hex Size D	Size Connection		Length C
A	B	A	B				
F5904	SG114	F5924	SG114R	3/4"	1/4" Male Flare	1/4" Female Flare	3 1/16"
F5905	SG115	F5925	SG115R	3/4"	3/8" Male Flare	3/8" Female Flare	3 1/4"
F5916	SG206	F5936	SG206R	1"	1/2" Male Flare	1/2" Female Flare	3 11/16"
F5917	SG207	F5937	SG207R	1 1/8"	5/8" Male Flare	5/8" Female Flare	4"
F5900	SG110	F5920	SG110R	3/4"	1/4" Male Flare	1/4" Male Flare	3 1/8"
F5901	SG111	F5921	SG111R	3/4"	3/8" Male Flare	3/8" Male Flare	3 3/8"
F5914	SG204	F5934	SG204R	1"	1/2" Male Flare	1/2" Male Flare	3 15/16"
F5915	SG205	F5935	SG205R	1 1/8"	5/8" Male Flare	5/8" Male Flare	4 1/8"
F5908	SG118	F5928	SG118R	3/4"	1/4" Sweat	1/4" Sweat	7 1/4"
F5909	SG119	F5929	SG119R	3/4"	3/8" Sweat	3/8" Sweat	7 3/4"
F5918	SG208	F5938	SG208R	1"	1/2" Sweat	1/2" Sweat	7 3/4"
F5919	SG209	F5939	SG209R	1 5/8"	5/8" Sweat	5/8" Sweat	7 3/4"

