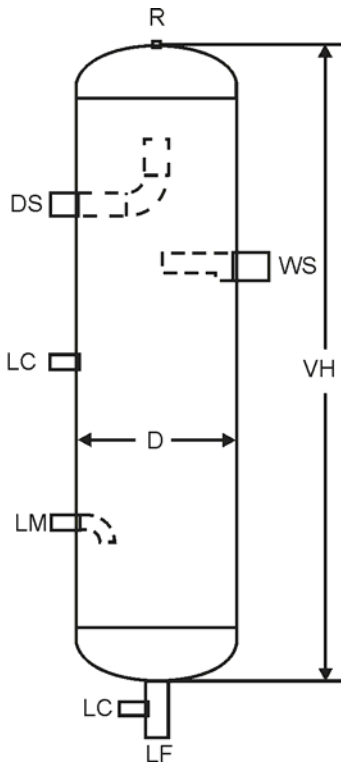


VERTICAL SURGE DRUM



Suitable for Ammonia



Features:

- Vertical Surge Drums are designed to fit new and existing installations
- 250 PSI Standard design pressure for Ammonia
- CO₂, Halocarbon, Propane and high-pressure models available
- Carbon steel shell standard stainless steel optional
- Connections for relief, level column, liquid make-up, wet & dry suctions and liquid feed included
- Pneumatic pressure testing to reduce moisture contamination
- Valve packages available boxed or installed

Catalog Number	Dimensions in Inches							
	Vessel Dia. D	Vessel Height VH	Liquid Feed LF	Wet Suction WS	Dry Suction DS	Level Column LC	Relief R	Liquid Make-up LM
HUS-12	12.75	60	3	3	2 1/2	1 1/4	1/2	3/4
HUS-16	16	66	4	4	3	1 1/4	1/2	1
HUS-20	20	72	4	5	4	1 1/4	1/2	1
HUS-24	24	72	4	5	4	1 1/4	1/2	1 1/4
HUS-30	30	78	5	6	5	1 1/4	1/2	1 1/2
HUS-36	36	84	6	8	6	1 1/4	1/2	1 1/2
HUS-42	42	90	8	10	8	1 1/4	1/2	2
HUS-48	48	102	8	10	8	1 1/4	1/2	2

Please contact factory for "Certified Dimensions".

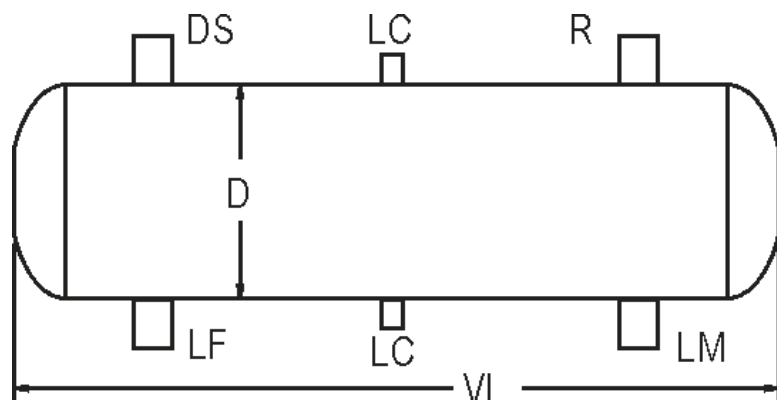
Catalog Number	Surge Volume Cu. Ft.	CAPACITY (TR) FOR AMMONIA REFRIGERANT (R-717)										
		SINGLE STAGE						TWO STAGE				
		40°F	30°F	20°F	10°F	0°F	-10°F	-10°F	-20°F	-30°F	-40°F	-50°F
HVS-12	1.3	43.2	39.2	35.4	31.8	28.4	25.2	29.5	26.0	22.7	19.8	17.1
HVS-16	2.6	69.8	63.4	57.2	51.4	45.9	40.7	47.4	42.0	36.8	32.0	27.6
HVS-20	4.4	111.3	101.0	91.2	81.9	73.1	64.9	76.1	67.1	58.8	51.0	44.0
HVS-24	6.4	162.4	147.4	133.1	119.5	106.7	94.7	111.0	98.0	85.9	74.8	64.7
HVS-30	11.2	257.0	233.4	210.7	189.2	168.9	149.9	175.7	155.1	136.0	118.4	102.4
HVS-36	17.7	391.2	355.2	320.7	288.0	257.1	228.1	255.2	225.2	197.5	172.0	148.7
HVS-42	26.2	529.2	480.5	433.9	389.6	347.8	308.6	345.3	304.7	267.2	232.7	201.2
HVS-48	41.3	695.5	631.4	570.2	512.0	457.1	405.6	453.7	400.5	351.2	305.8	264.5

Capacities based on liquid ammonia make-up feed temperatures of 95°F for single stage and 25°F for two stage. Surge Volume is based on an Operating Level at lower head to shell seam, with the High Level a minimum of 6" below the Wet Suction Nozzle.

HORIZONTAL SURGE DRUM



Suitable for Ammonia



Features:

- **Horizontal Surge Drums** are designed to fit new and existing installations
- **250 PSI** Standard design pressure for Ammonia
- **C02, Halocarbon, Propane** and high-pressure models available
- **Carbon steel shell** standard stainless steel optional
- **Connections** for relief, level column, liquid make-up, wet & dry suctions and liquid feed included
- **Pneumatic** pressure testing to reduce moisture contamination
- **Valve** packages available boxed or installed

Dimensions in Inches								
Catalog Number	Vessel Dia. D	Vessel Height VL	Liquid Feed LF	Wet Suction WS	Dry Suction DS	Level Column LC	Relief R	Liquid Make-up LM
HHS-12	12	48	2 1/2	3	2	1 1/4	1/2	3/4
HHS-16	16	60	3	4	2 1/2	1 1/4	1/2	3/4
HHS-20	20	72	3	4	3	1 1/4	1/2	1
HHS-24	24	84	4	5	4	1 1/4	1/2	1
HHS-30	30	96	4	5	4	1 1/4	1/2	1 1/4
HHS-36	36	108	5	6	5	1 1/4	1/2	1 1/4
HHS-42	42	108	6	8	6	1 1/4	1/2	1 1/2
HHS-48	48	120	6	8	6	1 1/4	1/2	2

Please contact factory for "Certified Dimensions".

Catalog Number	Surge Volume Cu. Ft.	CAPACITY (TR) FOR AMMONIA REFRIGERANT (R-717)										
		SINGLE STAGE						TWO STAGE				
		40°F	30°F	20°F	10°F	0°F	-10°F	-10°F	-20°F	-30°F	-40°F	-50°F
HHS-12	1.3	24.4	22.1	20.0	17.9	16.0	14.2	16.6	14.7	12.9	11.2	9.7
HHS-16	2.7	38.5	35.0	31.6	28.4	25.3	22.5	26.4	23.2	20.4	17.7	15.3
HHS-20	5.2	62.7	56.9	51.4	46.1	41.2	36.5	43.0	37.9	33.2	28.9	25.0
HHS-24	8.8	91.4	83.0	74.9	67.3	60.1	53.3	62.4	55.2	48.4	42.1	36.4
HHS-30	16.1	144.7	131.4	118.6	106.5	95.1	84.4	98.9	87.2	76.5	66.6	57.6
HHS-36	26.4	210.2	190.8	172.3	154.7	138.1	122.5	143.8	126.6	111.3	96.9	83.8
HHS-42	36.9	277.7	252.0	227.6	204.5	182.5	161.9	190.0	167.7	147.0	128.0	110.6
HHS-48	53.8	366.0	332.3	300.0	269.5	240.5	213.4	250.2	220.8	193.6	168.6	146.0

Capacities based on liquid ammonia make-up feed temperatures of 95°F for single stage and 25°F for two stage.

Surge Volume is based on an Operating Level at lower head to shell seam, with the High Level a minimum of 6" below the Wet Suction Nozzle.



Industrial & Commercial Refrigeration Products 800.96.HENRY